

# / BROKK 900 PEDESTAL BOOM

The advantages of a Brokk robot are many and in this modified solution the benefits become clear. The Brokk 900 Pedestal Boom allows you to apply the power and precision of Brokk's demolition robots to primary breaking tasks that feed gyratory crushers and grizzlies. The option of easy attachment changes and remote maneuvering with video and audio feedback makes it the ultimate plug-and-play solution for rock breaking at gyratory crushers and grizzlies.

- Small footprint
- 360 degrees slewing
- Perfect for spaces with low headroom
- Plug-and-play solution



Hydraulic breaker in images: BHB 1500  
Load and stability diagram available on request



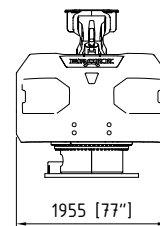
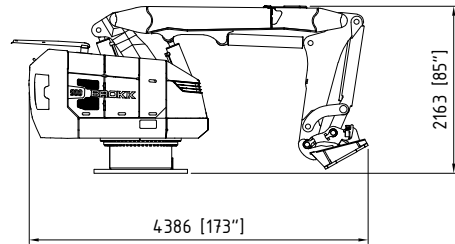
## TECHNICAL DATA

<b>Slewing speed</b>	16 sec/360°
<b>Hydraulic system capacity</b>	230 l; 60.8 US gal
<b>Pump type</b>	Variable load-sensing
<b>System pressure</b>	18.5 MPa; 2683 psi
<b>Increased pressure to attachment</b>	25 MPa; 3626 psi
<b>Pump flow 50 Hz</b>	148 l/min; 39 US gal/min
<b>60 Hz</b>	178 l/min; 47 US gal/min
<b>Power*</b>	71 kW
<b>Recommended fuse size*</b>	125 A
<b>Machine weight**</b>	7150 kg; 15,763 lbs
<b>Recommended attachment weight</b>	1500 kg; 3307 lbs

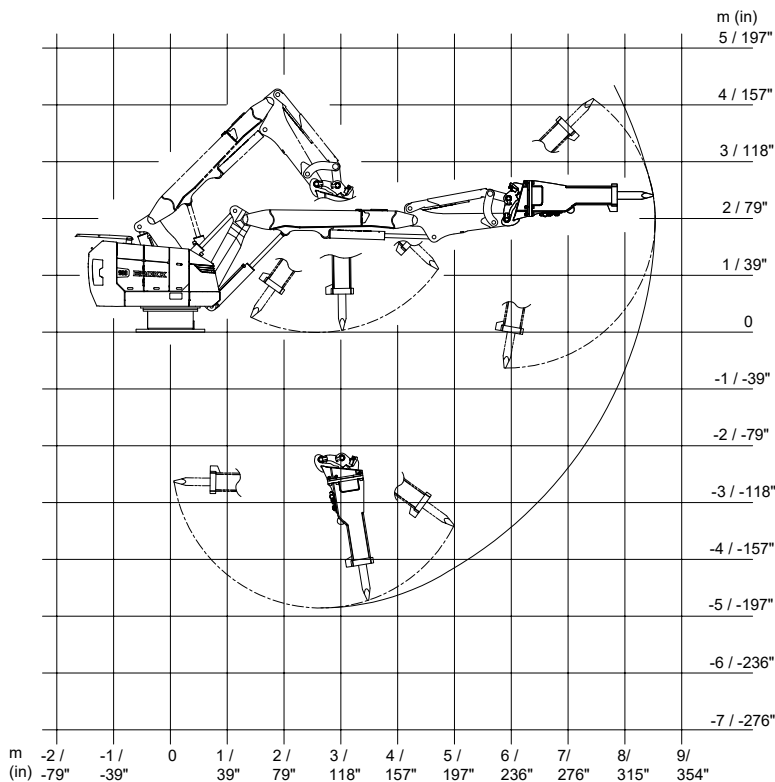
\*Valid for 400 V/50 Hz and 440 V/60 Hz

\*\*Excluding options and attachment

## SIZE



## REACH



Tolerances for technical data may vary